



ColorFlare printer compatibility guide*

Intec ColorFlare has been developed to work with the Intec ColorSplash series and is compatible with the world's top digital printer manufacturers

*Call for confirmation of model compatibility



intec
PRINTING SOLUTIONS

Canon



RICOH
imagine. change.

Kodak

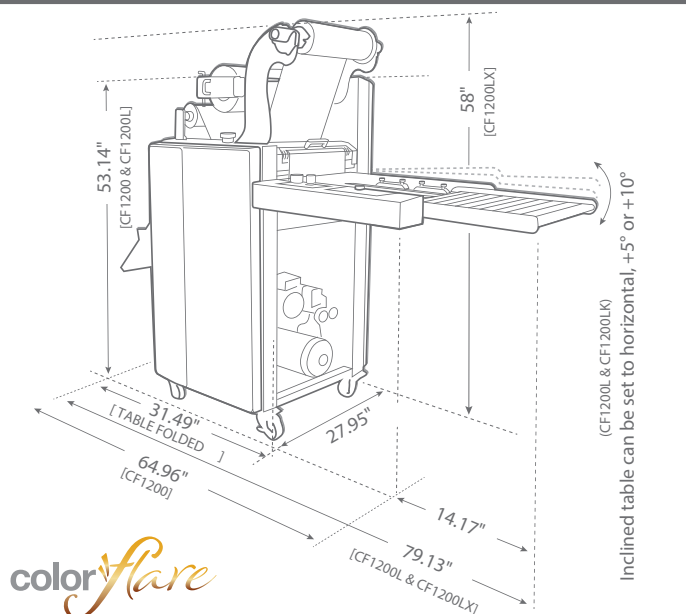


KONICA MINOLTA



Technical specifications*	
Laminating speed	59"/min ~ 393"/min
Base substrate thickness	100 ~ 400gm ²
Front roller diameter	Top: high glossy chrome 3.937" Bottom: silicon 3.149"
Rear roller diameter	Silicon 2.165"
Power requirement	AC 220~240V, 50/60Hz, 12A
Power consumption	2.8kw
Warm-up time	5 minutes
Heating system	Infrared heater
Laminating temperature	Max: 302°F
Temperature control	Capacitive touch screen
Speed control	Capacitive touch screen
Display system	LCD Panel
Roller pressure	Pneumatic cylinder
Film core size	3"/Dual - 2.283", 1.968"
Air compressor	100 psi maximum pressure, 3.2 CFM open flow (50 Hz)
Temperature sensing method	Thermo-couple inserted in the roller shell
Net weight	412lbs
Dimensions	
Model	Paper size Max - Min
CF1200	27.95" x 64.96" x 53.14" 14.96" x 19.68" - 7.08" x 8.26"
CF1200L	27.95" x 69.13" x 53.14" 14.96" x 47.99" - 7.08" x 8.26"
CF1200LX	27.95" x 69.13" x 58" 14.96" x 47.99" - 7.08" x 8.26"

ColorFlare footprint



CF1200	CF1200L	CF1200LX
Base model	+ Extended, inclining table + Premium finish flaring assembly	+ Extended, inclining table + Premium finish flaring assembly + 2nd Flaring roller assembly

A growing range of consumables...

Lamination films

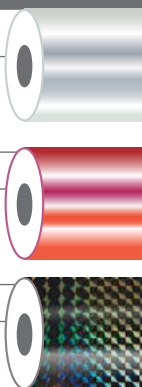
Various finishes including: gloss, matt and soft touch, for litho and digital print. Digital laminates are corona-treated for subsequent over-printing.

Foil flaring films

Available in a growing range of colors including: gold, silver, red, green, blue, violet, black, white and clear gloss. All can be applied direct to print.

Holographic flaring films

Such as: sparkle, milky way, mosaic etc. Perfect for adding premium effects to print.



Speed chart

