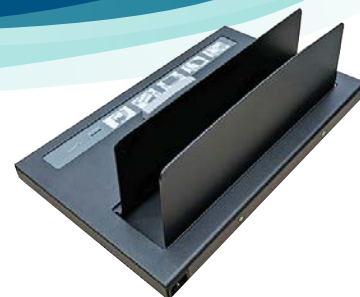


# Accel flex

A DESKTOP UNIT PERFECT FOR EDITING.  
FASTER, STRONGER BINDING IN A FLASH.

- Desktop manual operation
- Quick binding turnaround time when you need it
- Binds multiple documents simultaneously
- Allows easy editing
- Binds thick documents



The Bindomatic Coverbind Accel Flex is a powerful, yet compact, document binder that can be used on its own or complement our larger machines. The 2.5 inch binding plate accommodates documents up to 14 inches tall, and with the adjustable guide has the capacity to bind multiple documents simultaneously providing you quick turnaround when you need it. This tabletop binder delivers remarkable productivity in a small space, making it perfect for small businesses and larger offices alike.

Bind documents as thick as 2", soft covers, and hard covers; this binder will bind them all and do it stronger and more effectively than any comparable manual binding system on the market. You can bind up to 15 documents per minute.

If you need to remove, replace or add sheets, simply re-heat the binding. With the wide range of Bindomatic® covers, your business presentations, reports, proposals, statements, manuals etc, will always look and feel as professional as the content and message of your document.

#### DOCUMENT FORMATS

Min.: 5.5" x 8.5"  
Max.: 14-7/8" x 11"

#### SPINE SIZE

1/16" up to 2"

#### VOLUME

Up to 15 documents, dependent on spine width, per binding cycle (~60 seconds)

#### POWER SUPPLY

115v, 50/60Hz, 700W, 6.4 amps (max)

#### MACHINE DIMENSIONS

L 17-9/16" x W 10-3/8" x H 5-1/4"

#### MACHINE WEIGHT

12 lbs

# COVERBIND®

A SPIRAL COMPANY

Please contact: Al Boese

Ph: 847 283 0970

Fax: 847 235 2364

email: [al.boese@bindrite.com](mailto:al.boese@bindrite.com)